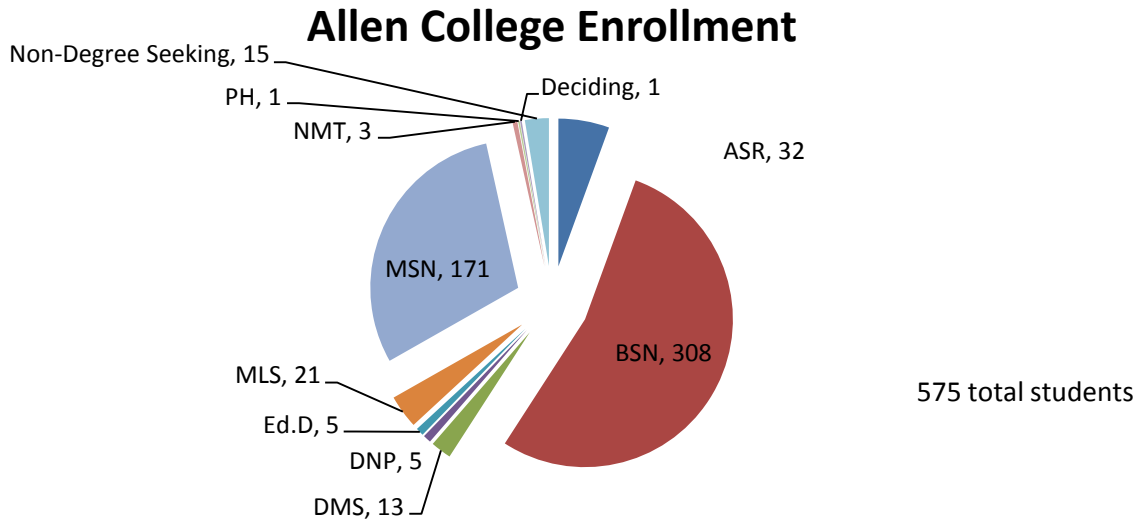
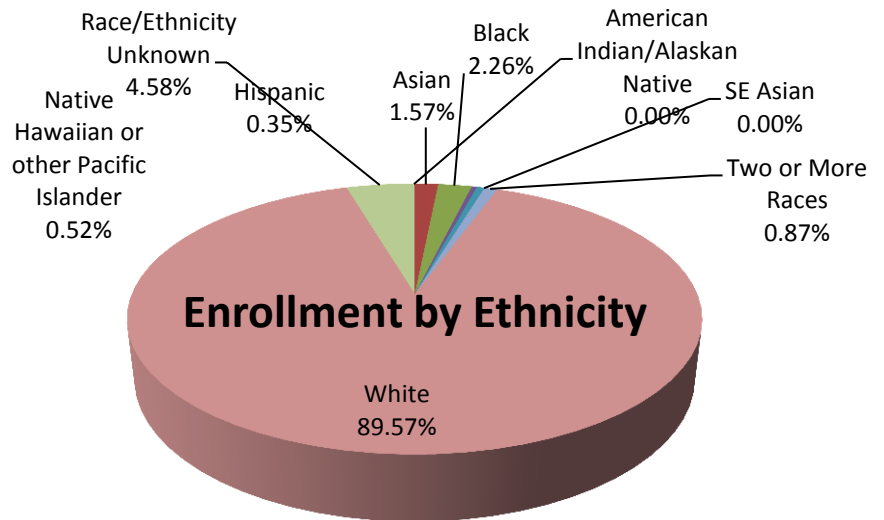
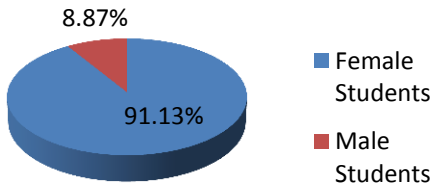


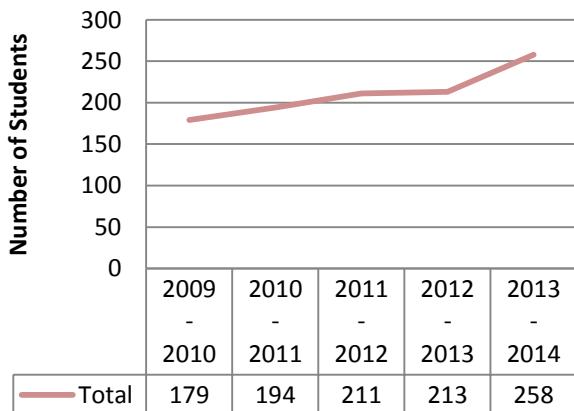
Allen College  
 Registrar's Report  
 September 15, 2014



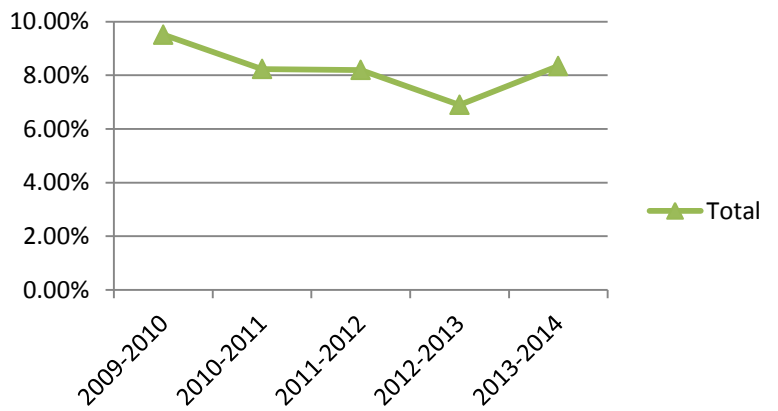
### Enrollment by Gender



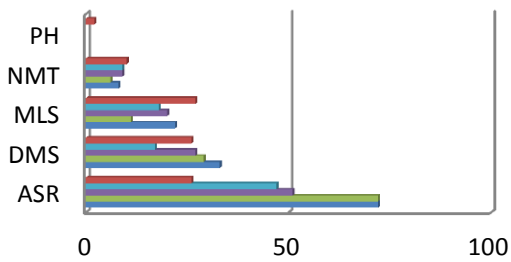
### Total Completions



### Allen College Attrition

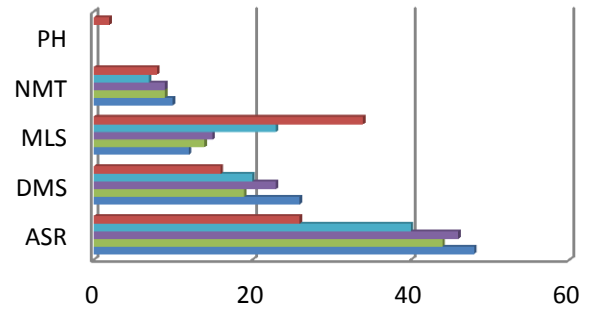


## Health Sciences Information Requests



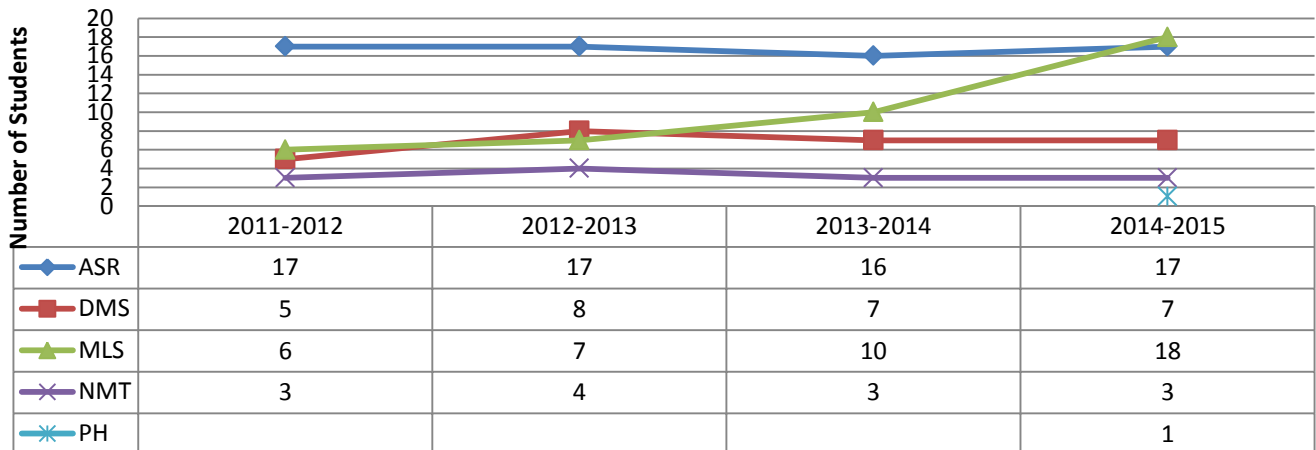
	ASR	DMS	MLS	NMT	PH
■ 2014-2015	26	26	27	10	2
■ 2013-2014	47	17	18	9	
■ 2012-2013	51	27	20	9	
■ 2011-2012	72	29	11	6	
■ 2010-2011	72	33	22	8	

## Health Sciences Applications

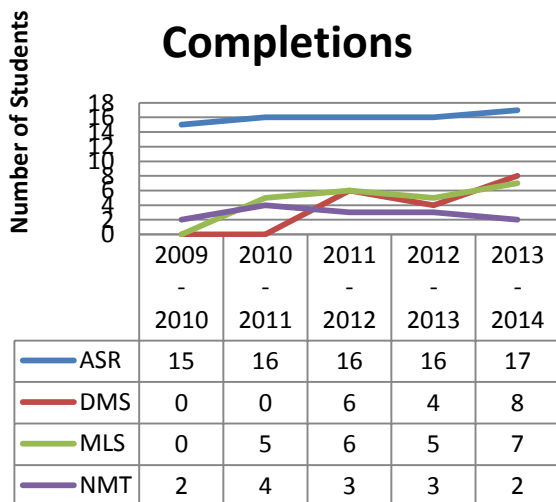


	ASR	DMS	MLS	NMT	PH
■ 2014-2015	26	16	34	8	2
■ 2013-2014	40	20	23	7	
■ 2012-2013	46	23	15	9	
■ 2011-2012	44	19	14	9	
■ 2010-2011	48	26	12	10	

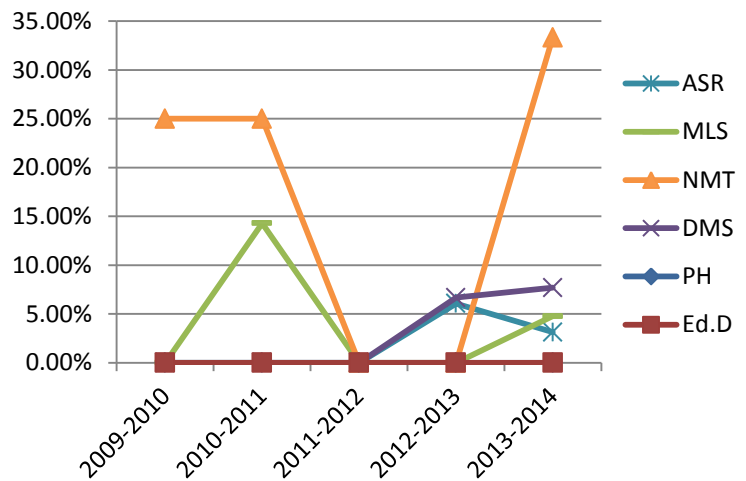
## Health Sciences Admissions



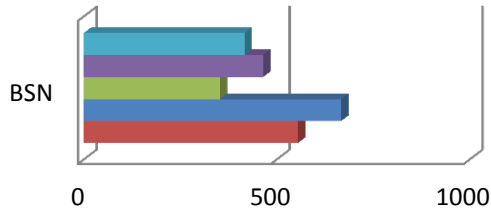
## Health Sciences Completions



## Health Sciences Attrition

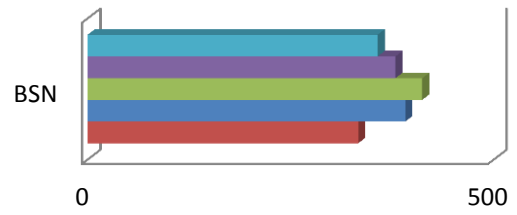


## BSN Information Requests



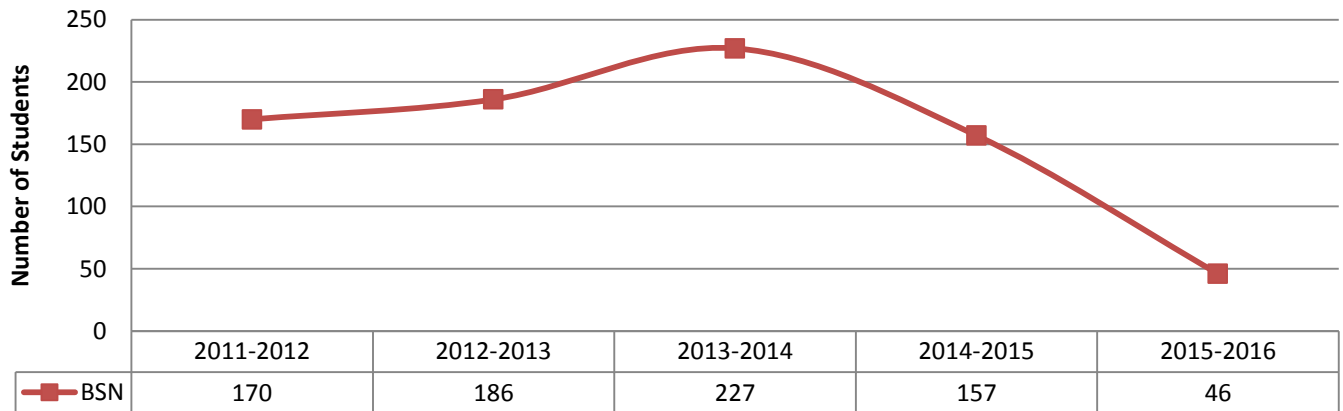
	BSN
2014-2015	417
2013-2014	465
2012-2013	353
2011-2012	667
2010-2011	555

## BSN Applications

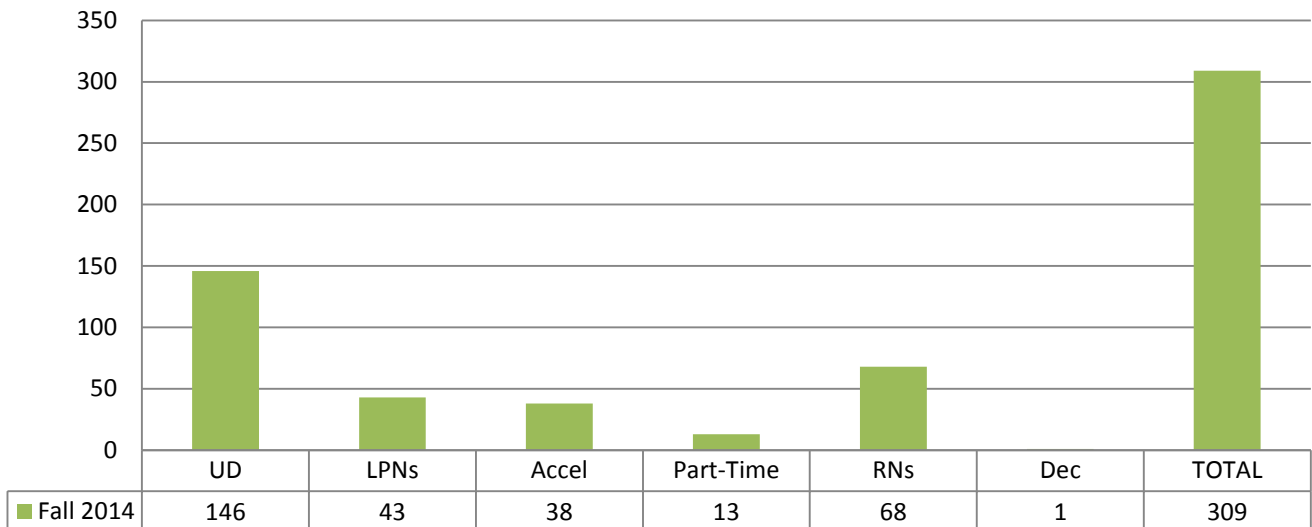


	BSN
2014-2015	357
2013-2014	379
2012-2013	412
2011-2012	391
2010-2011	333

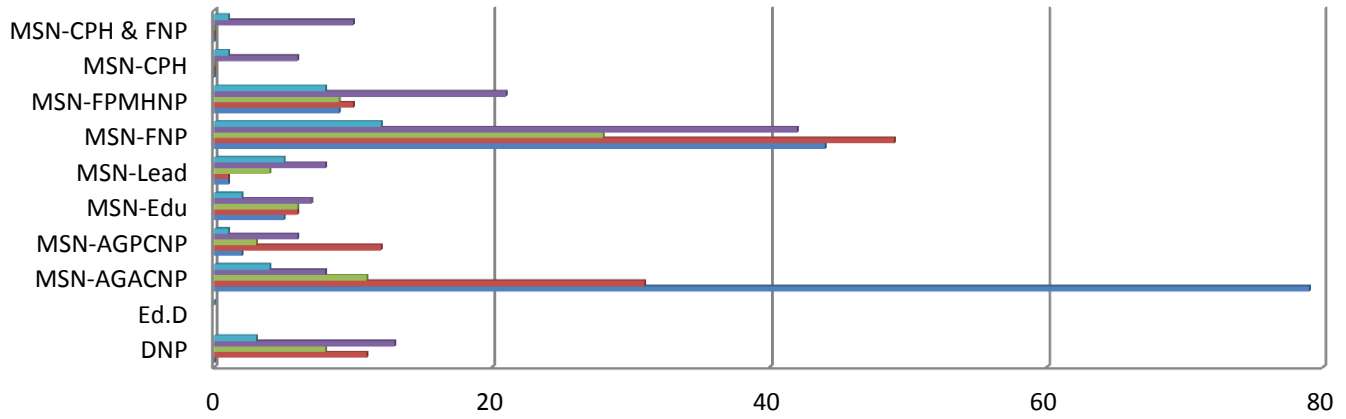
## BSN Admissions



## Fall 2014 BSN Enrollment by Track

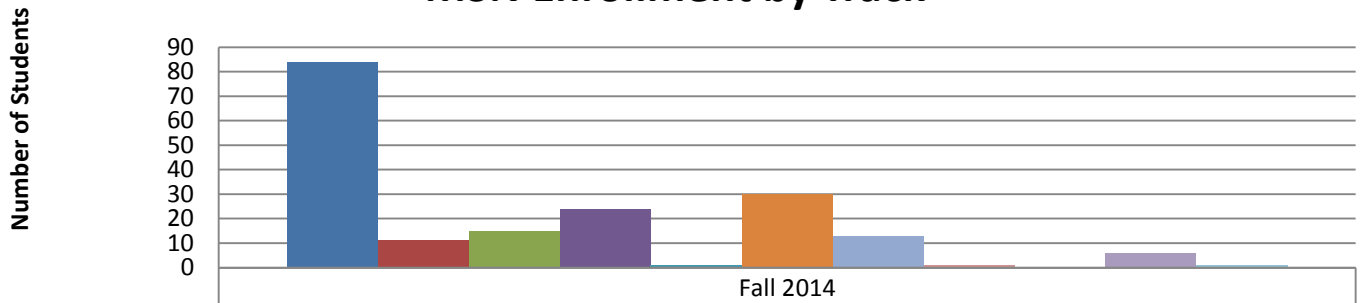


## Graduate Information Requests



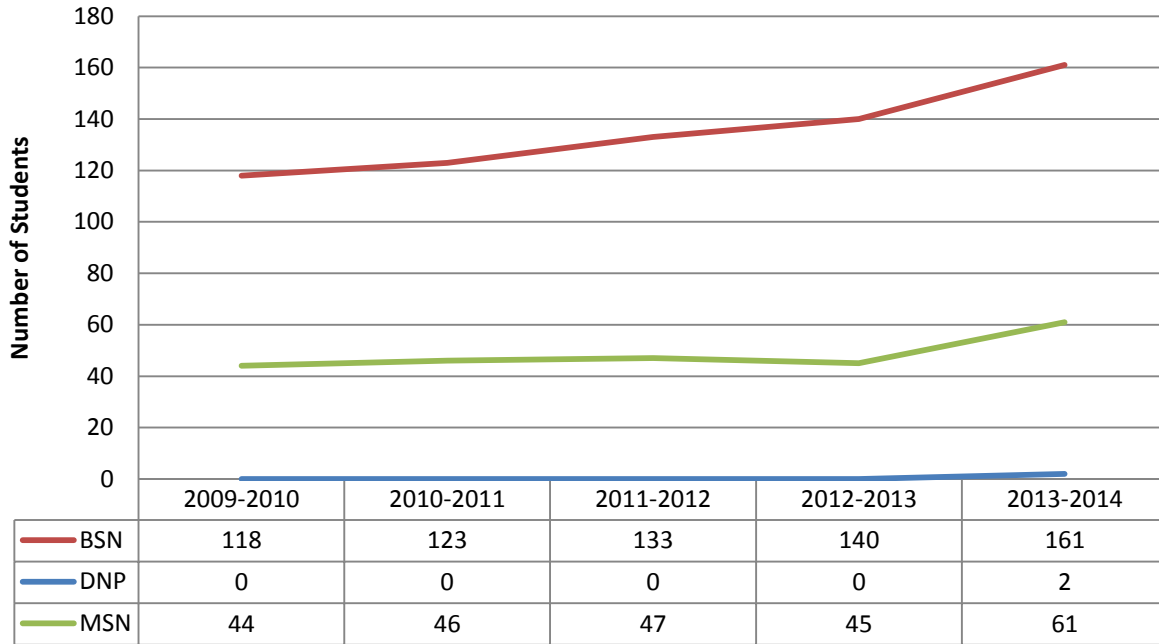
	DNP	Ed.D	MSN-AGACNP	MSN-AGPCNP	MSN-Edu	MSN-Lead	MSN-FNP	MSN-FPMHNP	MSN-CPH	MSN-CPH & FNP
2014-2015	3	0	4	1	2	5	12	8	1	1
2013-2014	13		8	6	7	8	42	21	6	10
2012-2013	8		11	3	6	4	28	9	0	0
2011-2012	11		31	12	6	1	49	10	0	0
2010-2011	0		79	2	5	1	44	9	0	0

## MSN Enrollment by Track



Track	Number of Students
FNP	84
EDU	11
Lead	15
AGACNP	24
CPH	1
FPMHNP	30
AGPCNP	13
CPH & FPMHNP	1
CPH & AGPCNP	0
CPH & FNP	6
FNP & FPMHNP	1

## Nursing Completions



## Nursing Attrition

