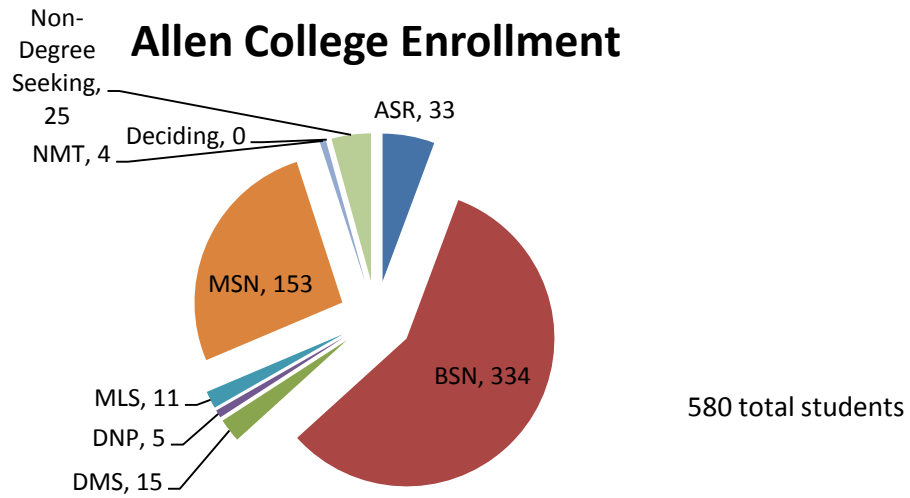
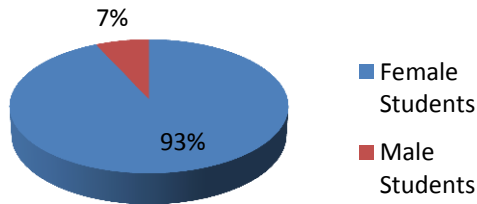


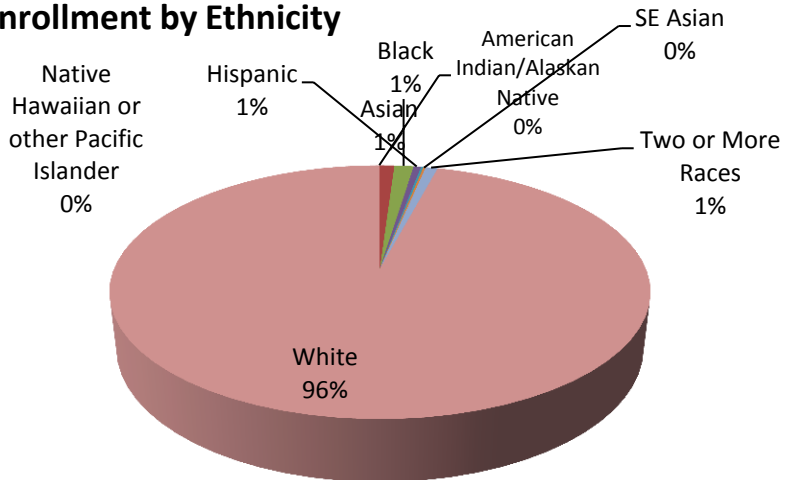
Allen College
Registrar's Report
September 15, 2013



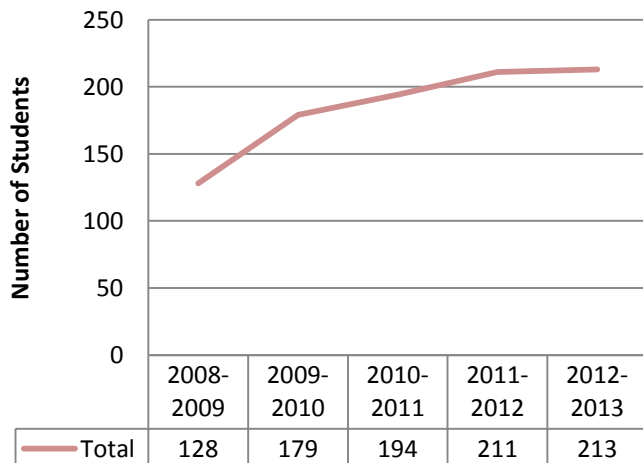
Enrollment by Gender



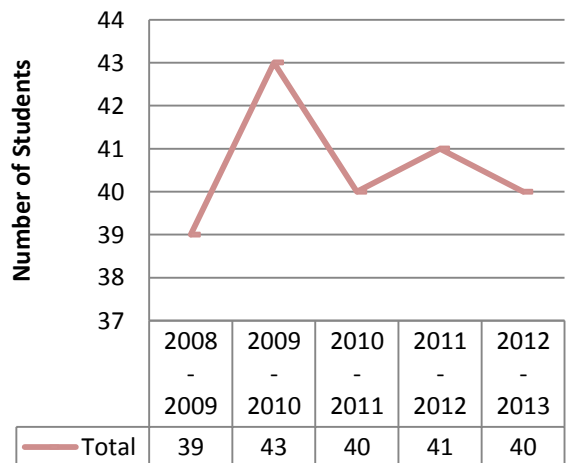
Enrollment by Ethnicity



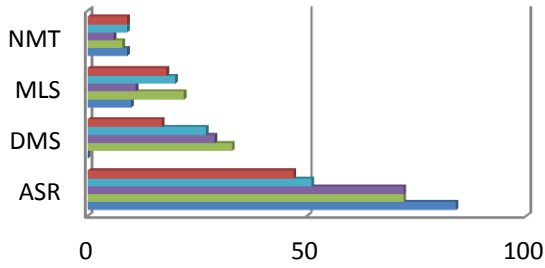
Total Completions



Allen College Attrition

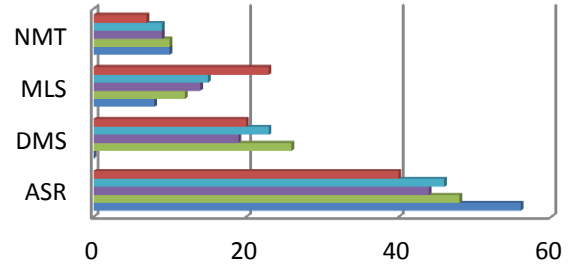


Health Sciences Information Requests



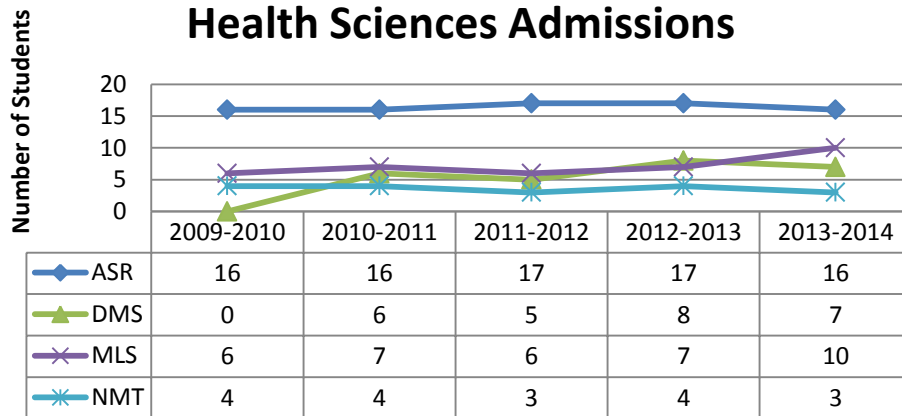
	ASR	DMS	MLS	NMT
2013-2014	47	17	18	9
2012-2013	51	27	20	9
2011-2012	72	29	11	6
2010-2011	72	33	22	8
2009-2010	84	0	10	9

Health Sciences Applications



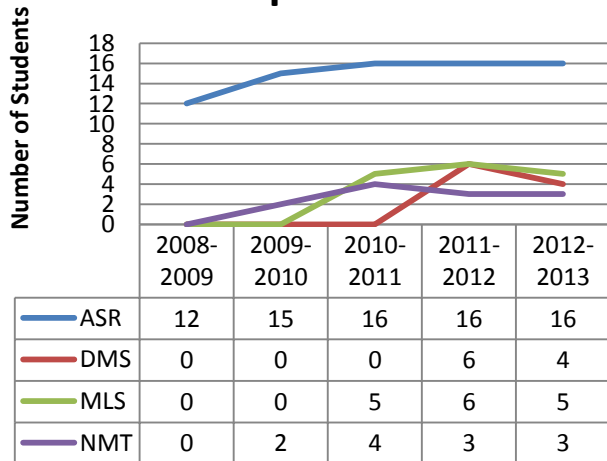
	ASR	DMS	MLS	NMT
2013-2014	40	20	23	7
2012-2013	46	23	15	9
2011-2012	44	19	14	9
2010-2011	48	26	12	10
2009-2010	56	0	8	10

Health Sciences Admissions



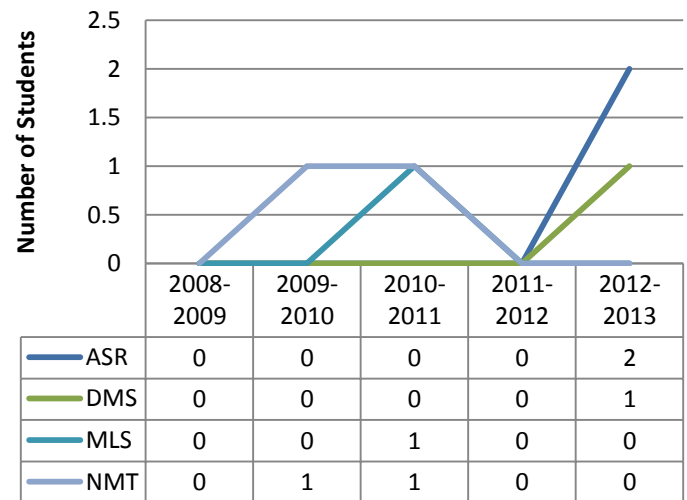
	2009-2010	2010-2011	2011-2012	2012-2013	2013-2014
ASR	16	16	17	17	16
DMS	0	6	5	8	7
MLS	6	7	6	7	10
NMT	4	4	3	4	3

Health Sciences Completions



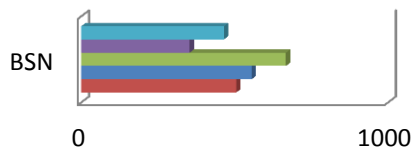
	2008-2009	2009-2010	2010-2011	2011-2012	2012-2013
ASR	12	15	16	16	16
DMS	0	0	0	6	4
MLS	0	0	5	6	5
NMT	0	2	4	3	3

Health Sciences Attrition



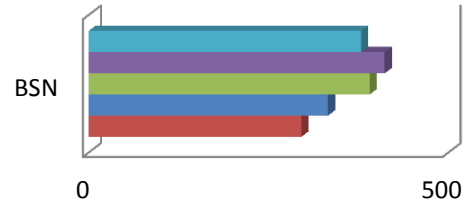
	2008-2009	2009-2010	2010-2011	2011-2012	2012-2013
ASR	0	0	0	0	2
DMS	0	0	0	0	1
MLS	0	0	1	0	0
NMT	0	1	1	0	0

BSN Information Requests



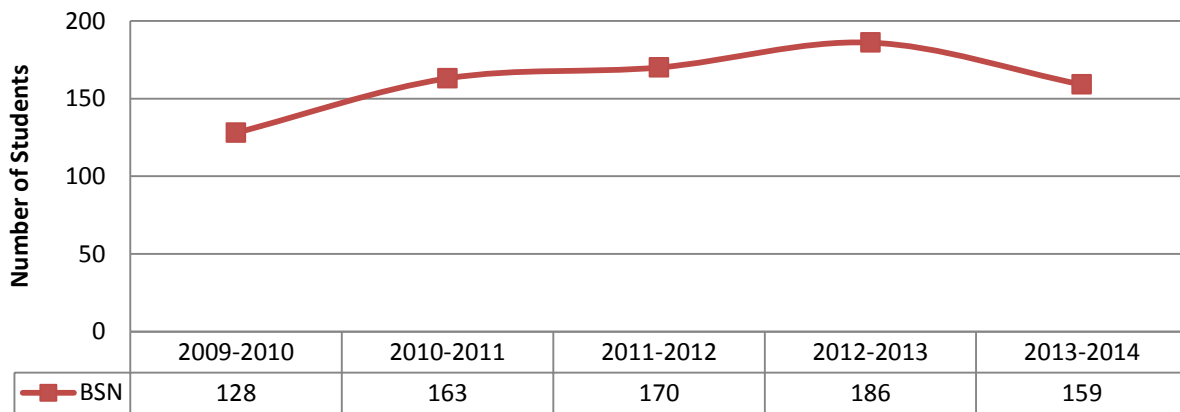
	BSN
2013-2014	465
2012-2013	353
2011-2012	667
2010-2011	555
2009-2010	505

BSN Applications

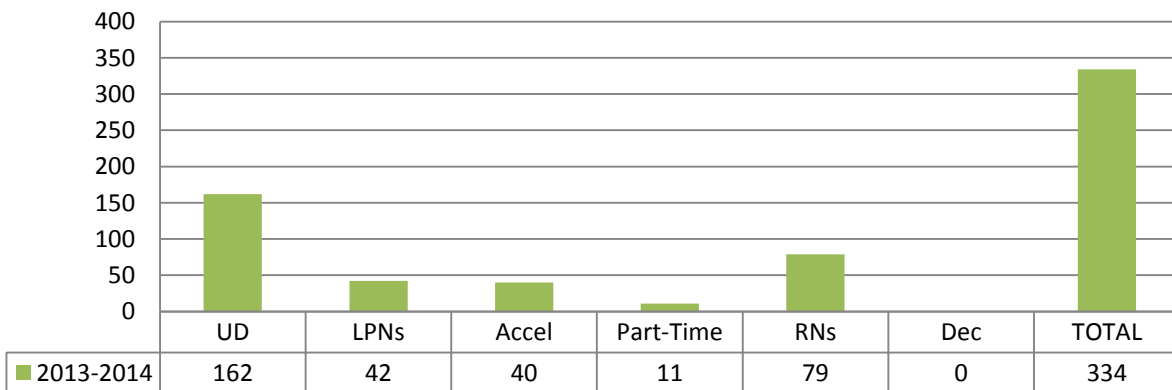


	BSN
2013-2014	379
2012-2013	412
2011-2012	391
2010-2011	333
2009-2010	296

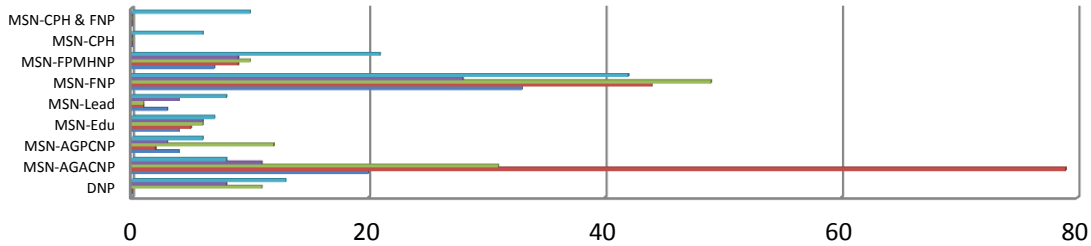
BSN Admissions



2013-2014 BSN Enrollment by Track

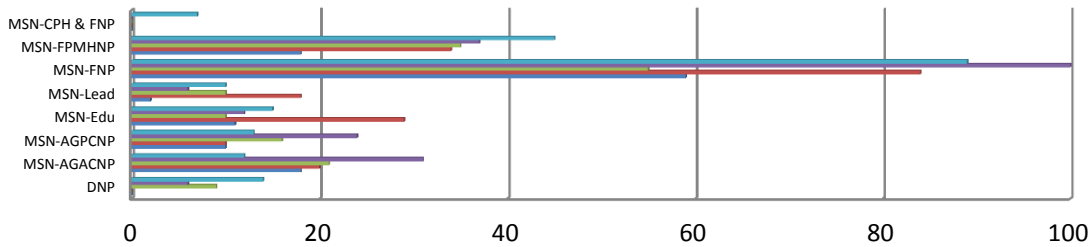


Graduate Information Requests



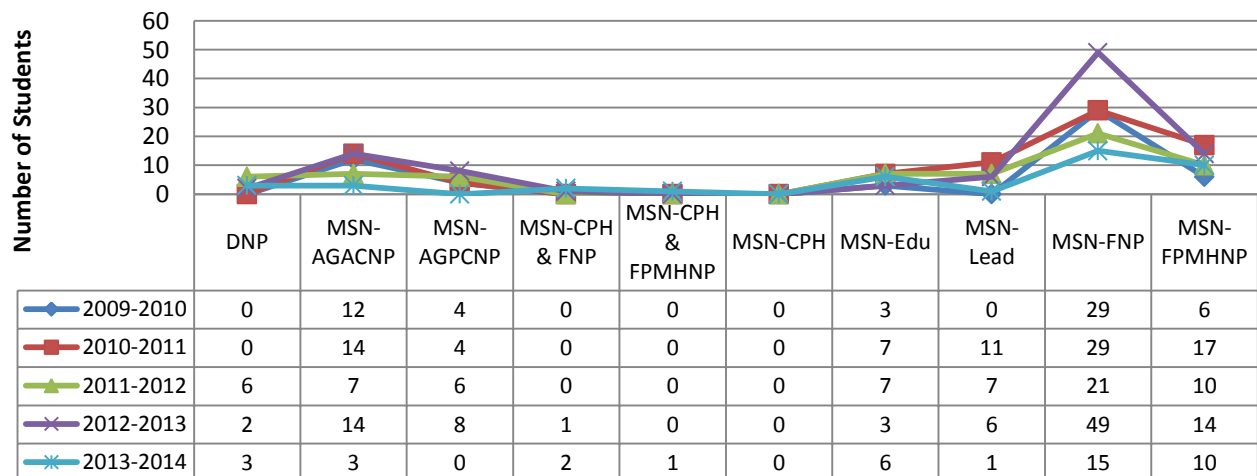
	DNP	MSN-AGACNP	MSN-AGPCNP	MSN-Edu	MSN-Lead	MSN-FNP	MSN-FPMHNP	MSN-CPH	MSN-CPH & FNP
2013-2014	13	8	6	7	8	42	21	6	10
2012-2013	8	11	3	6	4	28	9	0	0
2011-2012	11	31	12	6	1	49	10	0	0
2010-2011	0	79	2	5	1	44	9	0	0
2009-2010	0	20	4	4	3	33	7	0	0

Graduate Applications



	DNP	MSN-AGACNP	MSN-AGPCNP	MSN-Edu	MSN-Lead	MSN-FNP	MSN-FPMHNP	MSN-CPH & FNP
2013-2014	14	12	13	15	10	89	45	7
2012-2013	6	31	24	12	6	100	37	0
2011-2012	9	21	16	10	10	55	35	0
2010-2011	0	20	10	29	18	84	34	0
2009-2010	0	18	10	11	2	59	18	0

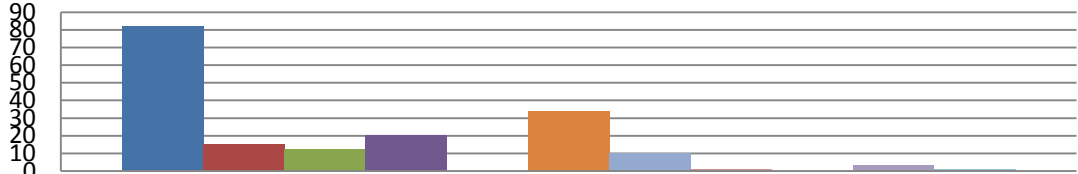
Graduate Admissions



	DNP	MSN-AGACNP	MSN-AGPCNP	MSN-CPH & FNP	MSN-CPH & FPMHNP	MSN-CPH	MSN-Edu	MSN-Lead	MSN-FNP	MSN-FPMHNP
2009-2010	0	12	4	0	0	0	3	0	29	6
2010-2011	0	14	4	0	0	0	7	11	29	17
2011-2012	6	7	6	0	0	0	7	7	21	10
2012-2013	2	14	8	1	0	0	3	6	49	14
2013-2014	3	3	0	2	1	0	6	1	15	10

MSN Enrollment by Track

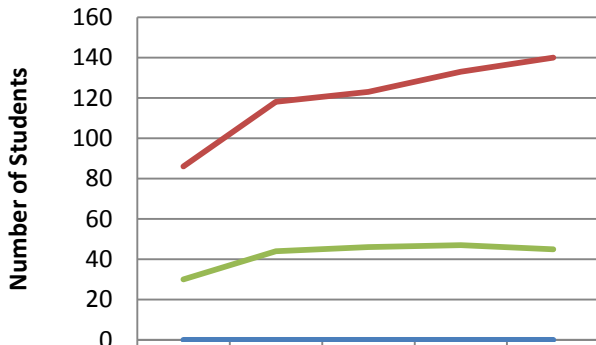
Number of Students



2013-14

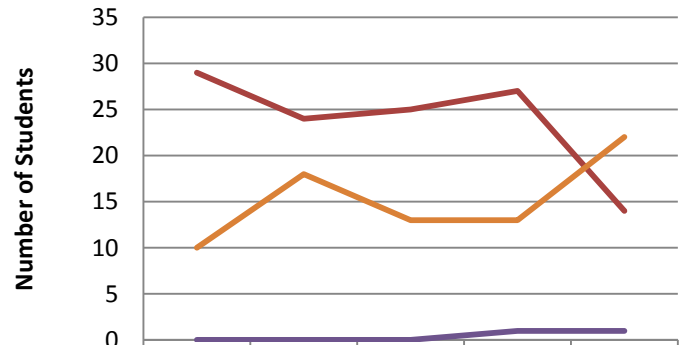
FNP	82
EDU	15
Lead	12
AGACNP	20
CPH	0
FPMHNP	34
AGPCNP	10
CPH & FPMHNP	1
CPH & AGPCNP	0
CPH & FNP	3
FNP & FPMHNP	1

Nursing Completions



	2008-2009	2009-2010	2010-2011	2011-2012	2012-2013
BSN	86	118	123	133	140
DNP	0	0	0	0	0
MSN	30	44	46	47	45

Nursing Attrition



	2008-2009	2009-2010	2010-2011	2011-2012	2012-2013
BSN	29	24	25	27	14
DNP	0	0	0	1	1
MSN	10	18	13	13	22